

EXTERIOR CLADDING REPORT

PROJECT # 1913070
CLIENT demo
ADDRESS 1232 Tornton Rd., Toronto
DESCRIPTION Front elevation



- Cladding Layout & Area Summary
- Material Estimate
- Panels Specification
- Transition Specification

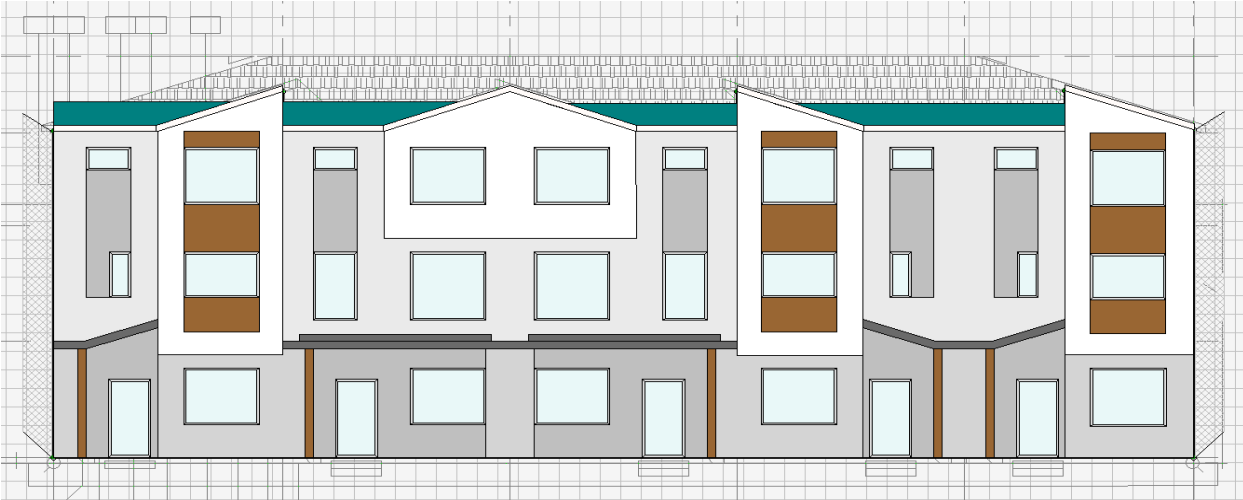
Sample Report – Prepared for demonstration purposes only.

Material prices and labor rates are illustrative and do not represent actual project costs.

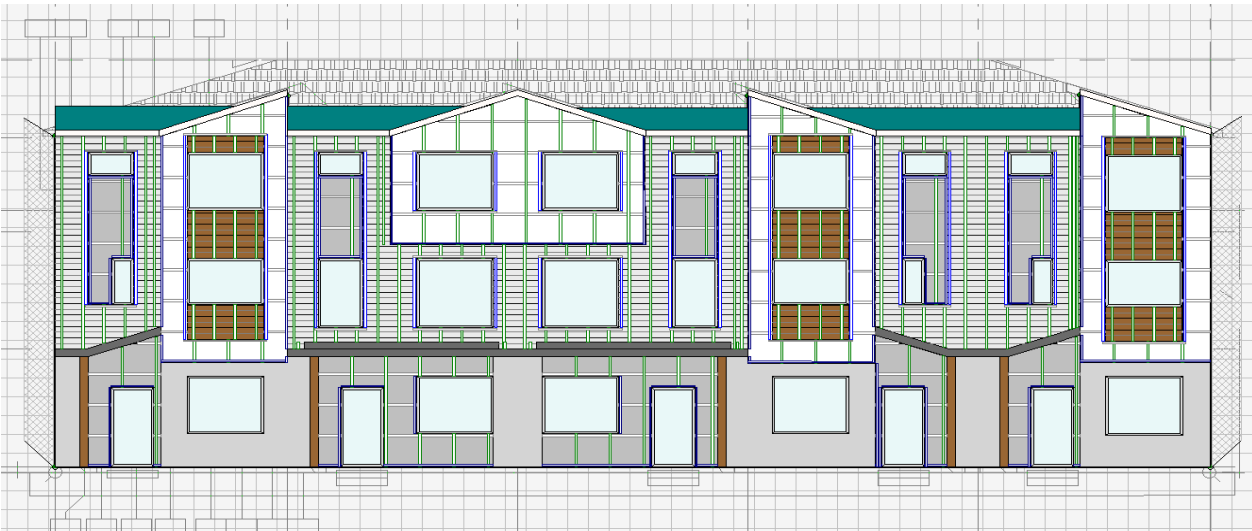
Source Data (PDF)

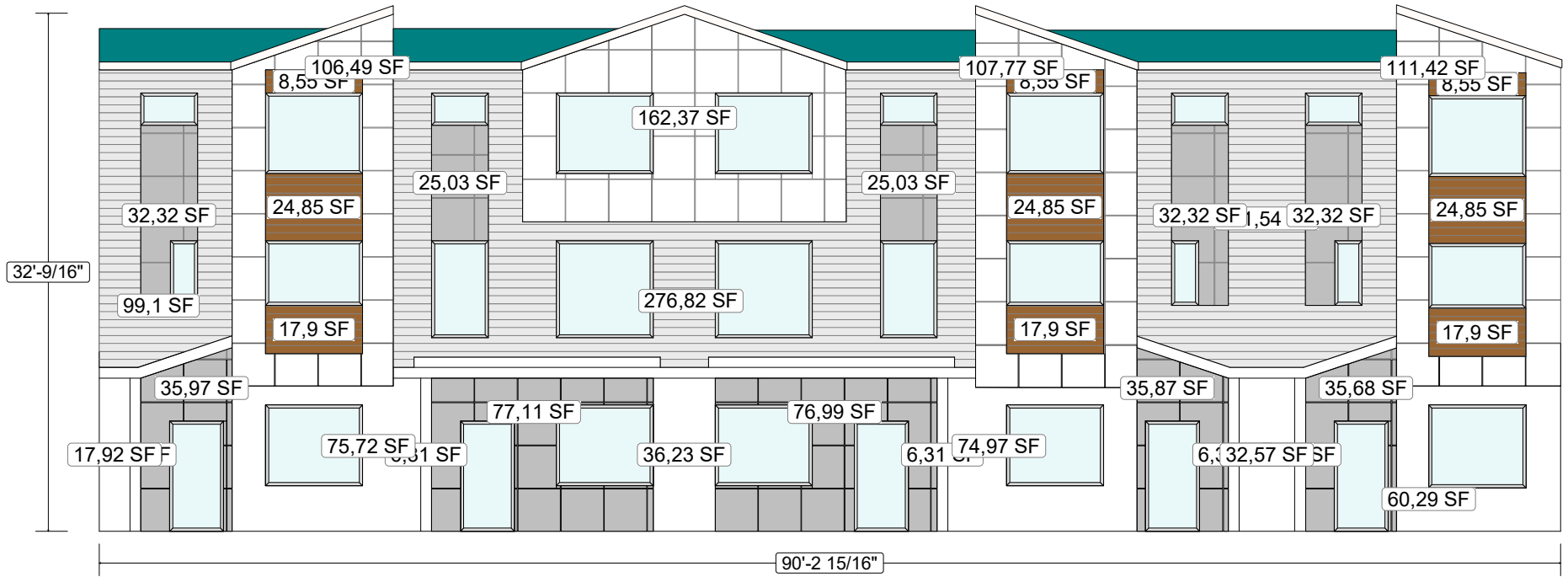


Prepared Data



Cladding





1	Siding	567,46	
2	Siding(2)	153,87	
3	C.Panel	488,06	
4	M.Panel	408,64	
5	Brick	297,69	
6	Pieces	31,56	

PROJECT # 1913070
ADDRESS 1232 Tornton Rd.

#	REF.	SKU	DESCRIPTION	UNIT	QTY.	WASTE	QTY.W	COST	TOTAL
			Front Elev. Siding						
			Works						
1	WRK-101	SDD_00001	Siding Installation	SF	567,47		567,47	3	1702,41
2	WRK-101	SDD_00002	Siding Installation (TRN)	SF	134,34		134,34	5	671,7
3	WRK-101	SDT_00002	Trim Installation	LF	699,7		699,7	0,5	349,85
			Total :						2723,96
			Materials						
4	CLD-101	320926	Siding Royal Light Gray	SF	567,26	3	584,28	10	5842,8
5	TRM-100(S)	120916	CPanel White	SF	134,34	3	138,37	15	2075,55
6	FRM-101	200810	Vertical Strapping	LF	625,98	3	644,76	2,5	1611,9
7	FRM-101	210859	SELF TAPPER 1 1/2	PCS	486	3	500,58	0,3	150,174
8	ACC-101	1000683110	Siding Nails 2-1/4-inch (7d)	PCS	264		264	0,01	2,64
9	TRM-100	280845	Siding Outer Corner	LF	18,41	3	18,96	2,36	44,7456
10	TRM-100	360920	EZ Outer Corner AL	LF	124,97	3	128,72	20	2574,4
11	TRM-100	280846	Siding J - trim	LF	431,36	3	444,3	1,91	848,613
12	TRM-100	360918	EZ J-trim AL	LF	124,97	3	128,72	20	2574,4
			Total :						15725,2226
			Total (Front Elev. Siding) :						18449,1826
			Front Elev. C.Panel						
			Works						
13	WRK-103	ACC_00001	ACM Panels Installation	SF	488,04		488,04	12	5856,48
14	WRK-103	ACC_00001	ACM Panels Installation((TRN)	SF	48,99		48,99	13	636,87
			Total :						6493,35
			Materials						
15	CLD-103	120916	CPanel White	SF	681,79		681,79	15	10226,85
16	FRM-103	250813	Horizontal Detail	LF	145,34	3	149,7	1	149,7
17	FRM-103	250812	Vertical Detail	LF	85,96	3	88,54	1	88,54
18	FRM-103	250838	Left Angle Start	LF	72,51	3	74,69	1	74,69
19	FRM-103	250820	Base Detail	LF	49,87	3	51,37	1	51,37
20	FRM-103	250841	Right Angle Start/End	LF	50,2	3	51,71	1	51,71
21	FRM-103	250817	Dissimilar Metals - Jamb	LF	126,64	3	130,44	1	130,44
22	FRM-103	250818	Dissimilar Metals - Sill	LF	32,48	3	33,45	1	33,45

23	FRM-103	250816	Dissimilar Metals	LF	32,48	3	33,45	1	33,45
24	FRM-103	210858	SELF TAPPER 1	PCS	486	3	500,58	0,25	125,145
25	ACC-103	AC_0000010	Insulation	SF	516,67		516,67	13	6716,71
26	ACC-103	AC_0000011	Sealant 0.5L	PCS	3		3	0,5	1,5
27	ACC-103	AC_0000012	Fastenings	PCS	91		91	0,1	9,1
28	TRM-100	360920	EZ Outer Corner AL	LF	71,85	3	74,01	20	1480,2
29	TRM-100	360918	EZ J-trim AL	LF	297,44	3	306,36	20	6127,2
			Total :						25300,055
			Total (Front Elev. C.Panel) :						31793,405
			Front Elev. Siding(2)						
			Works						
30	WRK-102	SDD_00001	Siding Installation	SF	153,92		153,92	3	461,76
31	WRK-102	SDT_00002	Trim Installation	LF	159,25		159,25	0,5	79,625
			Total :						541,385
			Materials						
32	CLD-102	320905	Siding Royal Redwood	SF	153,92	3	158,54	10	1585,4
33	FRM-102	200810	Vertical Strapping	LF	101,38	3	104,42	2,5	261,05
34	FRM-102	210859	SELF TAPPER 1 1/2	PCS	486	3	500,58	0,3	150,174
35	ACC-102	1000683110	Siding Nails 2-1/4-inch (7d)	PCS	72		72	0,01	0,72
36	TRM-100	280846	Siding J - trim	LF	159,25	3	164,03	1,91	313,2973
			Total :						2310,6413
			Total (Front Elev. Siding(2)) :						2852,0263
			Front Elev. M.Panel						
			Works						
37	WRK-104	ACC_00001	ACM Panels Installation	SF	408,6		408,6	12	4903,2
			Total :						4903,2
			Materials						
38	CLD-104	120917	CPanel Gray	SF	420,22		420,22	15	6303,3
39	FRM-104	250813	Horizontal Detail	LF	142,39	3	146,66	1	146,66
40	FRM-104	250812	Vertical Detail	LF	137,47	3	141,59	1	141,59
41	FRM-104	250820	Base Detail	LF	49,87	3	51,37	1	51,37
42	FRM-104	250838	Left Angle Start	LF	99,08	3	102,05	1	102,05
43	FRM-104	250842	Top Head Detail	LF	28,54	3	29,4	1	29,4
44	FRM-104	250841	Right Angle Start/End	LF	62,01	3	63,87	1	63,87
45	FRM-104	210858	SELF TAPPER 1	PCS	486	3	500,58	0,25	125,145
46	ACC-104	AC_0000010	Insulation	SF	430,56		430,56	13	5597,28
47	ACC-104	AC_0000011	Sealant 0.5L	PCS	2		2	0,5	1
48	ACC-104	AC_0000012	Fastenings	PCS	76		76	0,1	7,6
49	TRM-100	360918	EZ J-trim AL	LF	405,25	3	417,41	20	8348,2

			Total :						20917,465
			Total (Front Elev. M.Panel) :						25820,665
			Front Elev. Brick						
			Works						
50	WRK-105	brk_0001	Brick Veneer Installation	SF	297,73		297,73	12	3572,76
			Total :						3572,76
			Materials						
51	CLD-105	120917	CPanel Gray	SF	396,86	3	408,77	15	6131,55
52	CLD-105	120916	CPanel White	SF	477,27	3	491,59	15	7373,85
53	CLD-105	320926	Siding Royal Light Gray	SF	567,26	3	584,28	10	5842,8
54	CLD-105	320905	Siding Royal Redwood	SF	153,92	3	158,54	10	1585,4
55	CLD-105	320901	Siding Royal Vintage Cream	SF	0,86	3	0,89	10	8,9
56	ACC-105	330912	Red Brick	SF	250,37		250,37	15	3755,55
57	ACC-105	F5665561	Mortar Mix	kg	208		208	3	624
58	ACC-105	F5665562	Brick ties	PCS	166		166	1	166
59	ACC-105	F5665563	Weep vents at base of wall	PCS	22		22	0	0
			Total :						25488,05
			Total (Front Elev. Brick) :						29060,81
			Front Elev. Pieces						
			Works						
60	WRK-106	CW01120	Intallation Columns Wraps	LF	47,38		47,38	5	236,9
			Total :						236,9
			Materials						
61	CLD-106	120917	CPanel Gray	SF	396,86		396,86	15	5952,9
62	CLD-106	120916	CPanel White	SF	477,27		477,27	15	7159,05
63	CLD-106	320926	Siding Royal Light Gray	SF	567,26		567,26	10	5672,6
64	CLD-106	320905	Siding Royal Redwood	SF	153,92		153,92	10	1539,2
65	CLD-106	320901	Siding Royal Vintage Cream	SF	0,86		0,86	10	8,6
66	ACC-106	380924	Column Wrap Chamclad	LF	47,38		47,38	1,9	90,022
			Total :						20422,372
			Total (Front Elev. Pieces) :						20659,272
			Front Elev. WRB						
			Works						
67		98778879	Montage WRB	SF	408,6		408,6	1	408,6
68		98778880	Flashing Installation	LF	61,81		61,81	1	61,81
			Total :						470,41
			Materials						
69		WRB_000001	WRB Membrane (house wrap)	SF	495,14		495,14	3	1485,42

70		WRB_000002	WRB Seam Tape	LF	374,02		374,02	8	2992,16
71		WRB_000003	Base Flashing	LF	64,9		64,9	1	64,9
			Total :						4542,48
			Total (Front Elev. WRB) :						5012,89
			Front Elev. Openings1						
			Works						
72	opn	IFLSH_001	Install Flashing	LF	272,77		272,77	3,4	927,418
			Total :						927,418
			Materials						
73	opn	390928	Head flashing (metal)	LF	136,38		136,38	2,1	286,398
74	opn	390929	Sill flashing (metal)	LF	136,38		136,38	2,3	313,674
75	opn	390930	Flashing tape (openings)	LF	272,77		272,77	0,3	81,831
76	opn	390931	Sealant	PCS	6		6	5,15	30,9
77	opn	390932	Flashing Fasteners	PCS	159		159	0,1	15,9
			Total :						728,703
			Total (Front Elev. Openings1) :						1656,121
			Total Works :						19869,38
			Total Materials :						115434,99
			Total :						135304,37

120916**CPanel White****681,79 SF**

#	ID	Width, in.	Height, in.	QTY.	Note
1		31 1/2"	25 1/4"	1	1
2		11/16"	6 1/4"	1	2
3		24 15/16"	31 1/2"	1	3
4		6 9/16"	3 13/16"	1	4
5		15/16"	3 13/16"	1	5
6		30 9/16"	31 1/2"	1	6
7		14 13/16"	31 1/2"	1	7
8		16 11/16"	3 13/16"	1	8
9		22 6/8"	3 13/16"	1	9
10		8 6/8"	31 1/2"	1	10
11		31 1/2"	31 1/2"	1	11
12		11/16"	11 7/8"	1	12
13		31 1/2"	19 1/4"	1	13
14		19 6/8"	6 13/16"	1	14
15		31 1/2"	17 13/16"	1	15
16		31 1/2"	26 1/4"	1	16
17		31 1/2"	23 1/2"	1	17
18		31 1/2"	12 7/16"	1	18
19		3 7/8"	1 3/8"	1	19
20		31 1/2"	21 1/4"	1	20
21		29 7/16"	10 3/16"	1	21
22		31 1/2"	11 11/16"	1	22
23		23 7/16"	19 15/16"	1	23
24		31 1/2"	20 5/8"	1	24
25		30 1/8"	10"	1	25
26		41 5/16"	41 5/16"	3	26,29,33
27		31 1/2"	35 1/8"	1	27
28		33 7/16"	41 5/16"	1	28
29		31 1/2"	33 13/16"	2	30,31
30		33 5/16"	41 5/16"	1	32
31		31 1/2"	31 6/8"	2	34,35
32		25 11/16"	41 5/16"	1	36
33		32 11/16"	31 1/2"	6	37,44,51,66,77,89
34		11/16"	31 1/2"	6	38,45,52,67,78,90
35		33 7/16"	31 1/2"	6	39,46,53,68,79,91
36		34 5/8"	31 1/2"	6	40,47,54,69,80,92
37		32 9/16"	31 1/2"	6	41,48,55,70,81,93
38		33 13/16"	31 1/2"	6	42,49,56,71,82,94
39		25 11/16"	31 1/2"	6	43,50,57,72,83,95
40		51 3/16"	51 3/16"	1	58
41		31 1/2"	51 3/16"	6	59,60-64
42		35 9/16"	51 3/16"	1	65
43		31 1/2"	3 13/16"	3	73,74,75
44		35 7/16"	31 9/16"	1	76

45		44 5/8"	31 1/2"	1	84
46		30 9/16"	31 1/2"	1	85
47		14 13/16"	31 1/2"	1	86
48		8 6/8"	31 1/2"	1	87
49		35 3/8"	31 9/16"	1	88
50		51 3/16"	27 6/8"	1	96
51		31 1/2"	31 1/2"	5	97,98-101
52		35 1/4"	22 1/4"	1	102
53		41 5/16"	31 1/2"	2	103,107
54		33 7/16"	20 1/16"	1	104
55		41 5/16"	21 1/2"	1	105
56		33 5/16"	31 1/2"	1	106
57		25 11/16"	20 6/8"	1	108
58		31 1/2"	23"	1	109
59		31 1/2"	22 7/8"	1	110
60		31 1/2"	20 15/16"	2	111,112
61		31 1/2"	19 5/8"	1	113
62		31 1/2"	8 1/4"	1	1
63		18 1/8"	31 1/2"	1	3

120917**CPanel Gray****420,22 SF**

#	ID	Width, in.	Height, in.	QTY.	Note
1		28 7/16"	31 1/2"	2	1,7
2		3 1/16"	1 7/8"	1	2
3		7 15/16"	1 7/8"	1	3
4		23 9/16"	31 1/2"	2	4,8
5		2 1/16"	17 6/8"	2	5,6
6		2 1/4"	17 6/8"	1	9
7		31 1/2"	13 6/8"	3	10,11,12
8		3 1/16"	1 5/8"	1	13
9		7 15/16"	1 5/8"	1	14
10		21 3/8"	31 1/2"	4	15,18,36,39
11		2 1/16"	31 1/2"	4	16,19,37,40
12		3 5/8"	31 1/2"	7	17,32,38,51,56,63,73
13		31 1/2"	31 1/2"	29	20,21,22,24-26,55,...
14		4 3/8"	31 1/2"	4	23,29,48,60
15		7"	31 1/2"	2	27,46
16		16 3/8"	31 1/2"	2	28,47
17		6 1/4"	31 1/2"	2	30,49
18		17 1/8"	31 1/2"	2	31,50
19		21 1/4"	31 1/2"	2	33,52
20		2 1/4"	31 1/2"	2	34,53
21		3 5/16"	31 1/2"	4	35,54,65,91
22		31 1/2"	1 7/8"	4	41,42,44,45
23		4 3/8"	1 7/8"	1	43
24		31 1/2"	1 5/8"	4	66,67,69,70
25		4 3/8"	1 5/8"	1	68
26		31 1/2"	28 3/16"	2	71,89
27		31 1/2"	17 11/16"	10	74,75-78,80-84
28		4 3/8"	17 11/16"	2	79,85
29		31 1/2"	29 9/16"	1	87
30		3 5/8"	18 15/16"	1	88
31		20 9/16"	6 7/8"	1	92
32		3 5/8"	8 1/4"	1	93
33		24 6/8"	8 1/4"	1	94
34		20 1/2"	6 13/16"	1	95
35		3 5/16"	8 1/16"	1	96
36		21 7/8"	31 1/2"	2	97,100
37		11 3/8"	31 1/2"	1	98
38		10 1/16"	31 1/2"	12	99,103,107,109,112,...
39		10 1/16"	15 1/2"	2	105,110
40		31 1/2"	21 11/16"	2	127,129
41		10 1/16"	21 11/16"	2	128,130
42		31 1/2"	5 11/16"	3	131,133,135
43		10 1/16"	5 11/16"	3	132,134,136

Front Elev

Transition Details Report [TRM-100]

#	REF.	DESCRIPTION	UNIT	QTY.	Trans.NO
1	OUT	280845 Siding Outer Corner	LF	18,41	7
2	OUT	360920 EZ Outer Corner AL	LF	196,82	1,2,3,19,20,21,22,23,25
3	J	360918 EZ J-trim AL	LF	827,66	1,2,3,4,5,14,15,16,19,20,21,22,24,25,26,27,28,29,30,31,32,33,34,35,36
4	J	280846 Siding J - trim	LF	590,62	1,3,4,5,6,8,9,10,11,12,13,14,15,16,17,18
5	M.Panel	120916 CPanel White	SF	183,33	1,2,3,19,20,21

1	Siding & C.Panel Vertical Level(+)	[J+J+OUT+M.Panel]
2	Siding & C.Panel Horizontal Level(+)	[J+OUT+M.Panel]
3	Siding & C.Panel Vertical Level(+)	[J+J+OUT+M.Panel]
4	Siding & M.Panel Vertical	[J+J]
5	Siding & M.Panel Horizontal	[J+J]
6	Siding & Roof Horizontal Level(+) Eave	[J]
7	Siding Edge Vertical Outside	[OUT]
8	Siding & Transition Sloped(B) Level(+)	[J]
9	Siding & Transition Horizontal Level(+)	[J]
10	Siding & Transition Vertical Level(+)	[J]
11	Siding & Opening Horizontal	[J]
12	Siding & Opening Horizontal	[J]
13	Siding & Opening Vertical	[J]
14	Siding & C.Panel Horizontal	[J+J]
15	Siding & C.Panel Horizontal	[J+J]
16	Siding & C.Panel Vertical	[J+J]
17	Siding & Opening Horizontal	[J]
18	Siding & Opening Horizontal	[J]
19	C.Panel & M.Panel Vertical Level(-)	[OUT+J+M.Panel]
20	C.Panel & Brick Vertical Level(-)	[OUT+J+M.Panel]
21	C.Panel & Brick Horizontal Level(-)	[OUT+J+M.Panel]
22	C.Panel & Roof Vertical Side	[OUT+J]
23	C.Panel Edge Vertical Outside	[OUT]
24	C.Panel & Roof Sloped Level(+) Rake	[J]
25	C.Panel & Transition Vertical Level(+)	[OUT+J]
26	C.Panel & Opening Horizontal	[J]
27	C.Panel & Opening Vertical	[J]
28	C.Panel & Opening Horizontal	[J]

29	M.Panel & Brick Vertical	[J]
30	M.Panel & Pieces Vertical Level(+)	[J"]
31	M.Panel Edge Horizontal	[J]
32	M.Panel & Transition Sloped Level(+)	[J]
33	M.Panel & Transition Horizontal Level(+)	[J]
34	M.Panel & Opening Horizontal	[J]
35	M.Panel & Opening Horizontal	[J]
36	M.Panel & Opening Vertical	[J]
37	Brick & Pieces Vertical Level(+)	
38	Brick Edge Vertical Outside	
39	Brick Edge Horizontal	
40	Brick & Transition Horizontal Level(+)	
41	Brick & Opening Horizontal	
42	Brick & Opening Vertical	
43	Brick & Opening Horizontal	
44	Pieces Edge Horizontal	
45	Pieces & Transition Horizontal Level(+)	